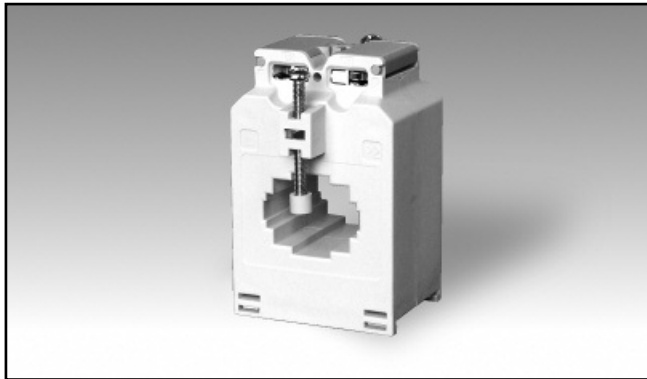


Accessories

AC Current Transformer (max 30x10 mm bus-bar)

Type CTD-2X

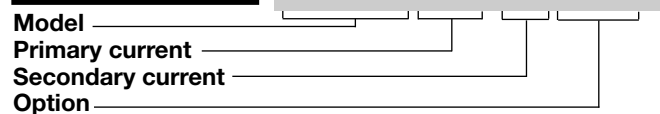


- Bus-bar type current transformer
- 0.5 class, currents from 40 to 600 A
- Integrated DIN-rail mounting holder
- Removable panel fixing clips
- 2 Bus-bar isolated fixing screws
- Double screw terminals (up to 8-wire connections)
- Sealable terminal block covers

Product Description

Cable/Bus-bar type current transformer with DIN-rail/bus-bar and panel mounting facility. Rated primary currents from 40 A to 600 A.

Ordering Key **CTD-2X 200 5A XXX**



Optional fixing kit: **CTD-kit**

Type Selection

| Primary current | Secondary current | Option |
|---|------------------------|--|
| From 40 to 600A (Refer to Range Table) | 1A 5A | XXX: none XTX: tropicalization 2XX: class 0.2S (depending on the primary current) |

Input Specifications

| | | |
|---|--|---|
| Operating frequency | 45 to 65 Hz | |
| Max. system voltage | 0.72 kV | |
| Rated insulation level | 3 kV/1 min. @ 50 Hz | |
| Insulation class | E (max 75°C) | |
| Short-time current rating I_{th} I_{dyn} | Typical 100 I_n / 1 s 2.5 I_{th} The short-time thermal current I_{th} is anyway limited by the cable/bus-bar size | |
| Extended current rating | 120% | |
| Security factor (FS) | ≤ 5 (Class: 0.5, 1 and 3) | |
| Special features | | cable/bus-bar fixing screws. 1 A secondary current, Class 0.2S Tropicalization |
| Working temperature | | -25°C to +60°C (-13°F to 140°F) (R.H. < 90% non condensing @ 40°C) |
| Storage temperature | | -30°C to +70°C (-22°F to 158°F) (R.H. < 90% non condensing @ 40°C) |
| Approvals | | CE |
| Connection Cable cross section area | | Screw type From 1.5 to 6 mm ² Min/Max screws tightening torque relevant to terminal block screws: From 1 to 2 Nm Max screws tightening torque relevant to the cable/bus-bar fixing screws: 0,3 Nm |
| Protection degree | | IP00 IP20 (with sealable terminal block covers + wire terminals) |
| Cable diameter | | Max. 24 mm |
| Bus-bar size Horizontal Vertical | | Max. 32x5; 30x10; 25x20 mm Max. 25x12 mm |
| Weight | | From 350 to 500 g |

General Specifications

| | |
|-----------------------------|--|
| Standards | According to EN60044-1 |
| Housing | ABS, self-extinguishing: UL 94 V-0 |
| Mounting | DIN-rail bus-bar and panel mounting |
| Standard accessories | Two terminal block screws. Two cable/bus-bar fixing screws. Two sealable terminal block covers. Two panel mounting fixing clips. Two plastic caps for cable/bus-bar fixing screws. |
| Optional accessories | Extended fixing kit: CDT-kit Two panel mounting fixing clips. Six cable/bus-bar fixing screws. Six plastic caps for |

Output Specifications

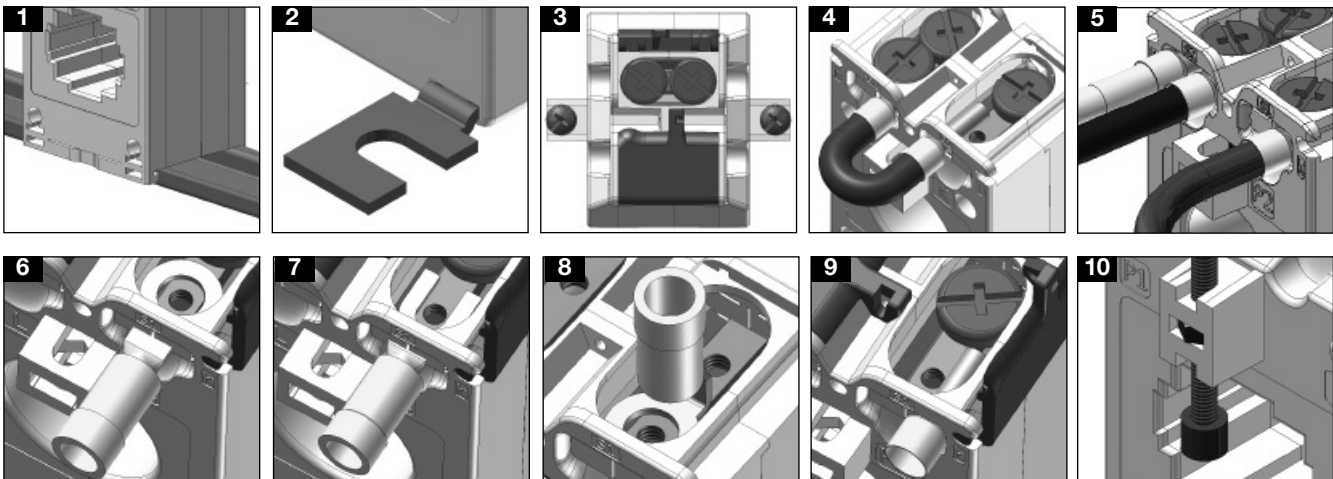
| | |
|--------------------------------|------------|
| Rated secondary current | 5 A or 1 A |
|--------------------------------|------------|

Range Table

| Model CTD-2X from 40A to 125A | | | |
|-------------------------------|-------------|------|------|
| Primary Current | Burden (VA) | | |
| | CL 0.5 | CL 1 | CL 3 |
| 40 | | | 1.25 |
| 50 | | | 1.5 |
| 60 | | | 2 |
| 70 | | | 2.5 |
| 75 | | 1.75 | 2.5 |
| 80 | | 2 | 2.75 |
| 100 | | 2.5 | 3 |
| 120 | | 2.75 | 3.75 |
| 125 | 2 | 2.75 | 3.75 |

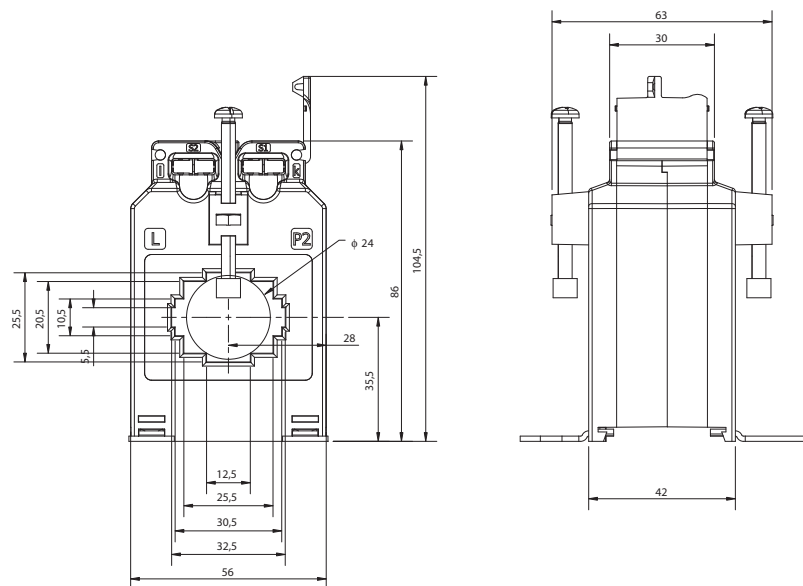
| Model CTD-2X from 150A to 600A | | | |
|--------------------------------|-------------|------|------|
| Primary Current | Burden (VA) | | |
| | CL 0.5 | CL 1 | CL 3 |
| 150 | 3 | 4 | 5 |
| 160 | 3 | 4 | 5 |
| 200 | 4 | 5 | 6.5 |
| 250 | 5.5 | 7 | 8 |
| 300 | 7 | 8.5 | 9.5 |
| 400 | 12 | 13.5 | 14.5 |
| 500 | 14 | 15.5 | 16.5 |
| 600 | 17.5 | 19 | 20 |

Benefits



- Easy and quick mounting either on a panel or on a DIN-rail (see figure 1-2).
- Protection of screw terminals using specific sealable covers to assure always the best safety (see figure 3).
- Bridging of current transformer output without changing the connection of the secondary, so to avoid any output overvoltage during either the maintenance or the installation procedure (see figure 4).
- Easy output and earth connection (see fig. 5).
- Screw terminals compatible with any kind of wire terminals (see figure 6-7-8-9).
- Multiple screws provided with isolation cap screws to grant a strong and reliable fixing of the current transformer to the bus-bar (see figure 10).

Dimensions (mm)



Wiring Diagram

